

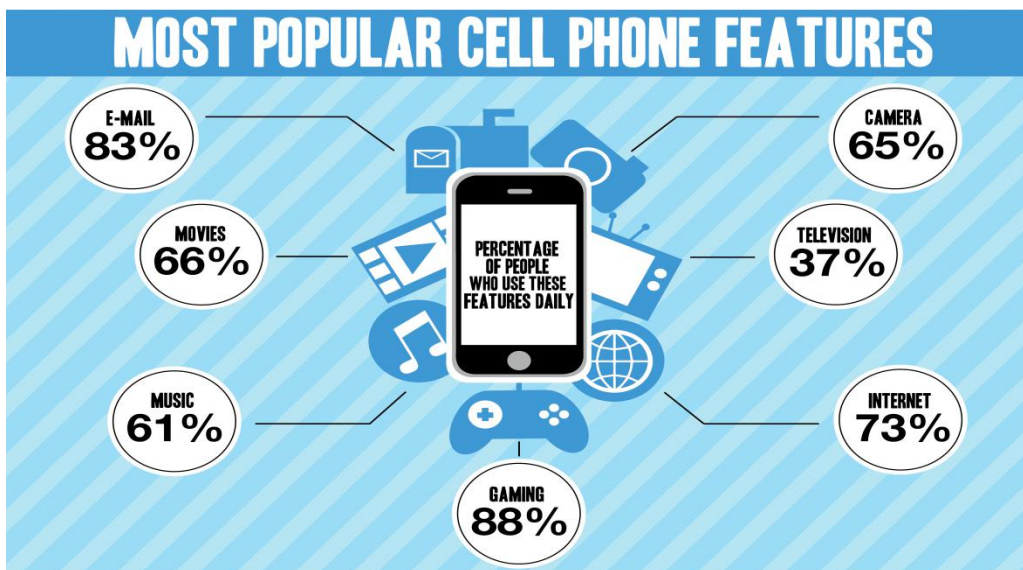
12

Submission and Obedience

Stay joined to me and I will stay joined to you. No branch can produce fruit alone. It must stay connected to the vine. It is the same with you. You cannot produce fruit alone. You must stay joined to me. John 15:4



A cell phone is a device that can make and receive telephone calls over a radio link while moving around a wide geographic area. It does so by connecting to a cellular network allowing access to the public telephone network.



In addition to making phone calls, modern cell phones also support a wide variety of other services such as text messaging, email, music,

Internet, Bluetooth, business applications, gaming, movie streaming, and photography. From 1990 to 2011, worldwide mobile phone subscriptions grew from **12.4 million to over 6 billion**, penetrating **about 87% of the global population** and reaching the bottom of the economic pyramid.



In our contemporary society **almost everyone has a cell phone**. This remarkable invention has revolutionized the way that humans communicate. Everywhere you look adults and children alike have a cell phone. As remarkable as they are, **they only work if they can get a signal and the phone has power**.



Depending on what location you are in, your signal may be weak or cut-off. On many occasions you may have seen people pointing their phones to the sky or in a certain direction trying to get a **signal**. You may also see people flocking to electrical outlets or charging stations to **recharge** their phones. Although there may be 6 billion individual users, **they all must submit to a signal provider**. And **they all must charge their phones daily and sometimes hourly** depending upon usage. It is

this **submission and obedience** to **the signal provider** and the **daily charging** that allows the cell phone to **produce remarkable communication services and applications**.

The woman answered the snake, “No, we can eat fruit from the trees in the garden. But there is one tree we must not eat from. God told us, You must not eat fruit from the tree that is in the middle of the garden. You must not even touch that tree, or you will die.” Genesis 3:2



The Webster dictionary defines:

submit - to yield to governance or authority

obey - to follow the commands or guidance of

Prior to ‘the fall’ in the Garden of Eden, **Mankind fully submitted to the will and instructions that the Creator had spoken for Mankind’s well being (Gen 3:2)**. Without sin in Mankind’s nature, **the signal was clear and uninterrupted**. There was **no debate or resistance** to the Creator’s governing authority. Mankind was fully compliant because they **stayed connected to the one and only true Provider**. **As a result of their obedience, relationships between God and Mankind; between male**

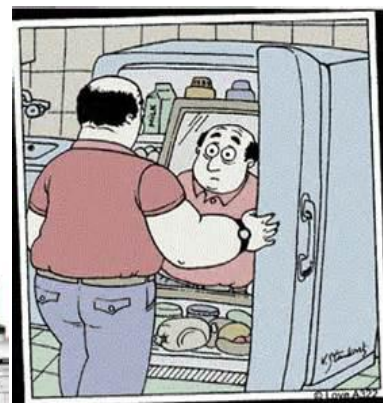
and female; between Mankind and the rest of creation were in complete harmony.



This theme of **submission and obedience** is constant throughout both the Old and New Testaments of the Bible. **Submission and Obedience** have to **work in tandem**. To yield and not follow will not accomplish the desired results of bearing fruit. Likewise to follow without yielding to the Creator's authority and rules will lead to *fleshly paths* on the road to **'nowhere'**. This theme of **submission and obedience** is shown in the Bible as a precursor to obtaining the righteous blessings and protection that the Creator has provided for his people.



Fed up with how her diet is going, Charlene takes a more serious aim at her target weight.



Bob devises the ultimate weight-loss system.

There are plenty of natural examples of how **submission and obedience work together**. At some point in our lives, we may have wanted to lose some extra weight that we acquired somewhere along the way. In order to achieve the weight loss, we must first **submit** the

principle of weight loss. Calories in must be less than calories out. This part is simple science. But even though it is simple, we still have to **submit** to the formula. But just knowing the formula does not help a person to lose weight. A person must **follow (obedience)** some plan to actually lose the weight. There is a multi-billion dollar industry that can tell you how to accomplish your weight loss goals....or you can follow the free biblical plan of eating right and getting the appropriate exercise/activity and rest. Whether you choose to **submit** to a plan from the weight loss industry or the bible, you still **must follow** it to accomplish your goal.



If **submission and obedience** are critical to achieving our natural and spiritual goals, then why doesn't Mankind buy into this theme? The **three primary inhibitors** are:

1. **The battle of *flesh vs the spirit* (Lesson 10)**
2. **An evil catalyst called the devil that provides temptations**
3. **Sin....the static in our connection line to the Creator. It separates us from our True Provider of the righteous signal.**





Our loving Savior, Jesus, came to atone for the original sin curse that Mankind's representatives, Adam and Eve, initiated through their lack of **submission and obedience**. He is the Master Repairman that has **fixed the connection line between the Creator and Mankind**. Now all we need to do is **submit daily to the Creator's authority** and **follow His instructions**. This is the purpose of daily prayers. The line has been repaired and is **open 24/7**. The fee and service charge has been paid and all calls are **free for us**. **Submission and Obedience will produce the fruit that both the Creator and you desire in your life.**